



JAPI V
COUACH 2200 launched 2009

2 Owners only.

Year-round maintained by professional skipper.

Ideal family or first time yacht, easy maintenance.

Excellent sea-behaviour, speeds and range for extensive cruising

**Easy to manoeuvre : bow & stern thrusters, wheelhouse door on side deck,
 3rd command on aft deck**

Superb deck area

Centrally located Master Cabin with own companion way

Open galley with bar counter.

Crew dinette in wheelhouse

**Extra multi-purpose luggage / storage / laundry room opposite to portside
 twin cabin and day toilet in salon**

September 2019

All details believed to be correct but neither guaranteed nor contractual. Specifications provided for informational purposes only. Offered for sale subject to being unsold, to any price & inventory changes or withdrawal from the market without notice. The Buyer assumes the responsibility to verify all speeds, capacities, consumptions and other measurements or data contained herein and otherwise provided. The Buyer is always advised to instruct his own

JAPI V

YEAR	launched 2009
BUILDER	Couach Yachts, France
DESIGNER	Couach Yachts
MODEL	Couach 2200
CONSTRUCTION	GRP hull & superstructure, teak decks
DIMENSIONS	LOA 21m95 (hull 21m) Beam 5m,34 Draft 1m35
CLASSIFICATION	Bureau Veritas, CE
DISPLACEMENT	35 T
ENGINES	2 x 1 360 HP 12 V MAN diesel,
ENGINE HOURS	1,910 hours as of September 2019
SPEEDS	Cruising 15-22 knots - Maximum 30 knots
FUEL CONSUMPTION	+/- 200 L/hr @ 15 knots
FUEL CAPACITY	8 800 litres
RANGE	+/- 600 NM @ 15 knots economical speed
WATER CAPACITY	1 500 litres + water maker
GUEST CABINS	6 guests in 2 doubles, 1 twin cabin, 3 showers
CREW CABIN	2 crew in 1 cabin + heads
LYING	South of France
FLAG	French
ASKING PRICE	EUR 575.000 EU VAT paid as of September 2019

COMMENTS

2 Owners only.

Year-round maintained by professional skipper

Ideal family or first time yacht, easy maintenance.

Excellent sea-behaviour, speeds and range for extensive cruising

Superb deck area.

Centrally located Master Cabin with own companion way

Open galley with bar counter.

Crew dinette in wheelhouse

Extra multi-purpose luggage / storage / laundry room opposite to portside twin cabin and day toilet in salon.

September 2019

All details believed to be correct but neither guaranteed nor contractual. Specifications provided for informational purposes only. Offered for sale subject to being unsold, to any price & inventory changes or withdrawal from the market without notice. The Buyer assumes the responsibility to verify all speeds, capacities, consumptions and other measurements or data contained herein and otherwise provided. The Buyer is always advised to instruct his own and independent surveyor to check all information on the vessel and to carry out a survey and sea-trial.

JAPI V

Couach 2200 launched 2009

ENGINES

2 x 1 360 hp 12 V MAN engines, 1 910 hours as of September 2019
5 years MAN overhaul done in November 2015
At 15 knots +/- 200 L/hr including generator
At 21/22 knots +/- 350 L/hr including generator
At 30 knots +/- 400 L/hr including generator

OTHER MACHINERY & ELECTRICS

Electric Bow thruster & Stern thruster
Trawling system

Generators :

Kholer 20 kw (4.390 hours 09/2019) + 9 kw Kholer new 2012 (1.820 hours 09/2019)
New 2018/07 Gel Exide battery bank 12V 220 Amp
200 l /h 220V 50hz automatic water maker new 2012
CONDARIA chilled water reverse cycle air conditioning system

NAVIGATION & COMMUNICATION EQUIPMENT

Raymarine ST 8002 autopilot
Raymarine Ray 218E DSC VHF + repeater on FB
Raymarine 72 NM 2 screens radar + + repeater on FB
Raymarine GP 32 GPS + repeater on FB
Raymarine ST70 echo sounder
Furuno NX 200 Pro weather fax
Tracpone FB 150 satcom
Trackvision M7 KVH sat tv

DECK EQUIPMENT

Lofrans 24v-2000w windlass
2 x cockpit electric winches
50 kg anchor
100m stainless steel chain
Spare anchor and chain

Opacmare 400 Kg Hydraulic crane in transom, new 2013
Opacmare hydraulic retractable passerelle
WILLIAMS 325 tender with 110hp engine, new 2012
Bimini top on fly-bridge

SAFETY EQUIPMENT

FM-200 fire fighting system in engine room
5 portable fire extinguishers

September 2019 – Details believed to be correct but neither guaranteed nor contractual

DOMESTIC EQUIPMENT

Saloon

Hifi Bang & Olufson

TV in salon & in Owner's cabin

Bar fridge and ice maker in salon

Galley

4 burner gas cooker

Miele microwave oven

Miele fridge

Miele dish washer

Multi-purpose room

Eurocave

Miel washer dryer

Faure deep freezer new 2012 in multi-purpose room

Fly Bridge

barbecue grill

wet bar and fridge

LAYOUT & DECORATION

White varnish wood in salon, cherry tree in cabins

Day toilet in salon

Semi-open galley

Centrally located Master Cabin, with own companion way on portside in salon

1 x VIP forward, 1 x twin portside, 1 x multifunction room starboard side accessible at wheel house level

See photos

September 2019 – Details believed to be correct but neither guaranteed nor contractual



JAPI V

Fantasic behaviour at sea combining speeds and range

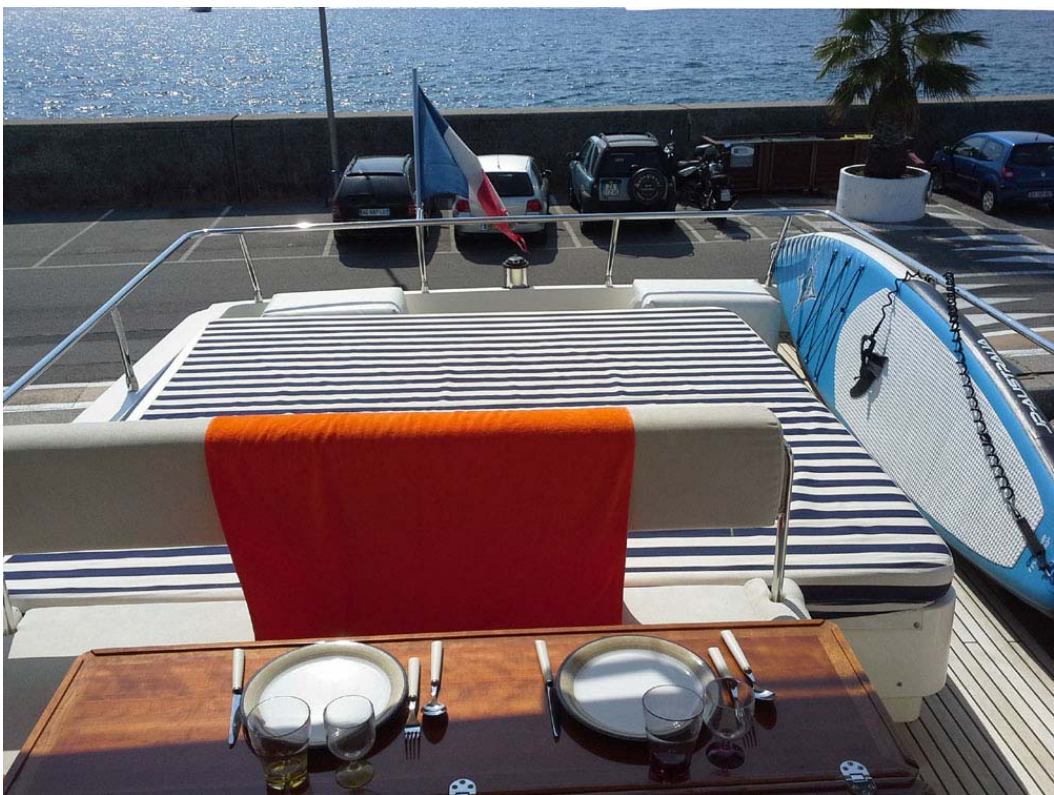


JAPI V
Forward sunbathing area



JAPI V

Sundeck :al-fresco dining under fixed bimini, barbecue wet bar, sunbathing



JAPI V
Sundeck :Huge sunpad



JAPI V

The spacious aft deck with coffee/dining table and aft sun privacy screen



JAPI V

The L-shaped white leather settee : it is drinks time

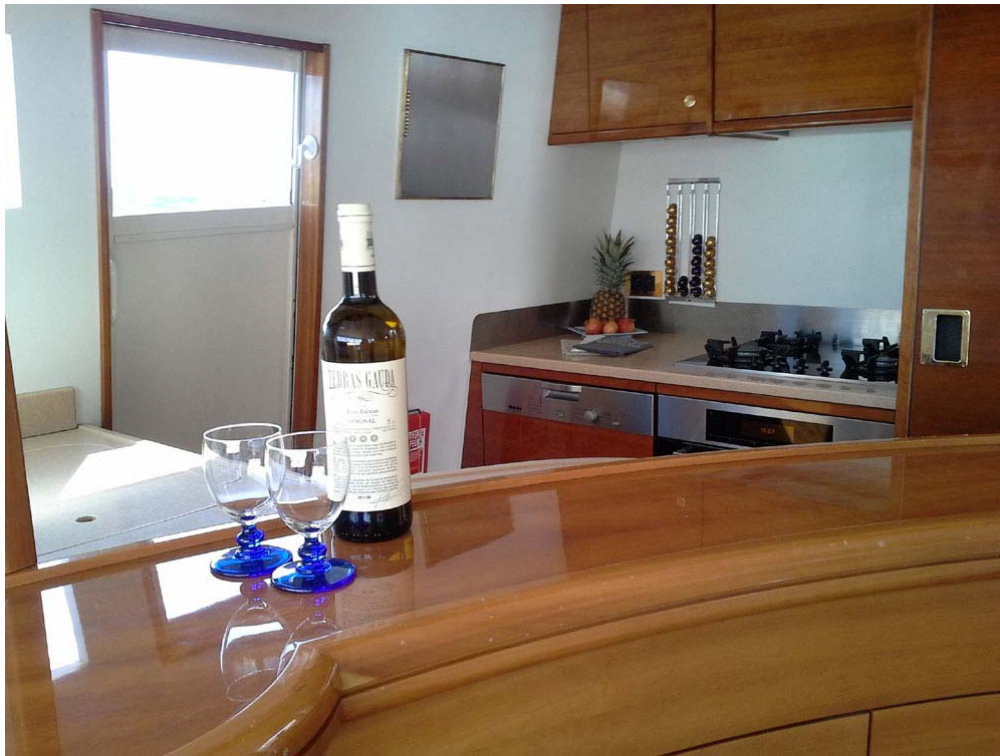


JAPI V

The salon table ready for dining - Bar, TV and plenty of storage

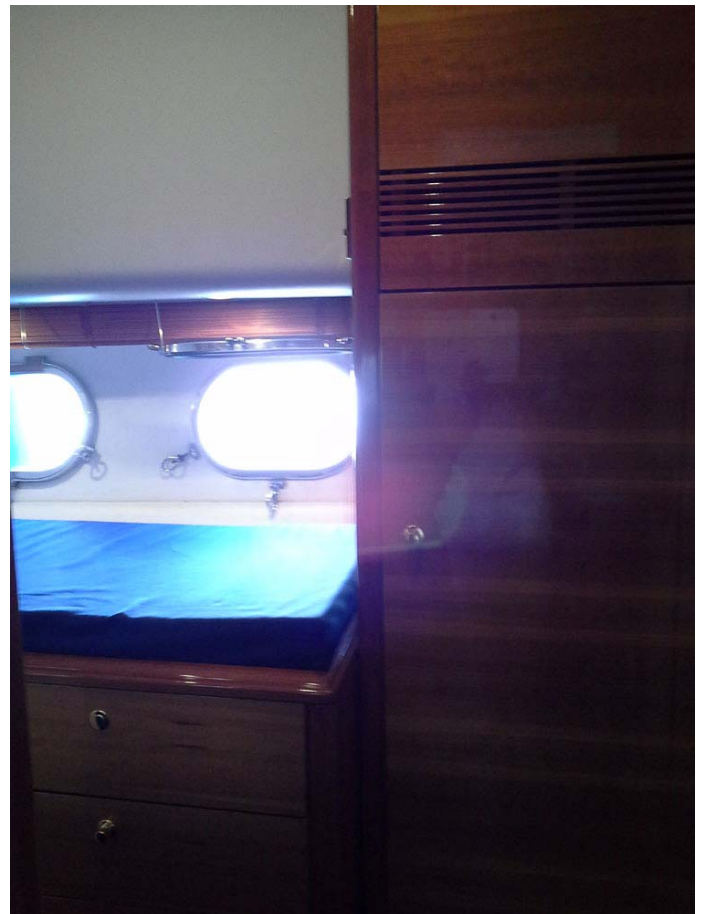


JAPI V
Possibly the only 72 ft with day toilet



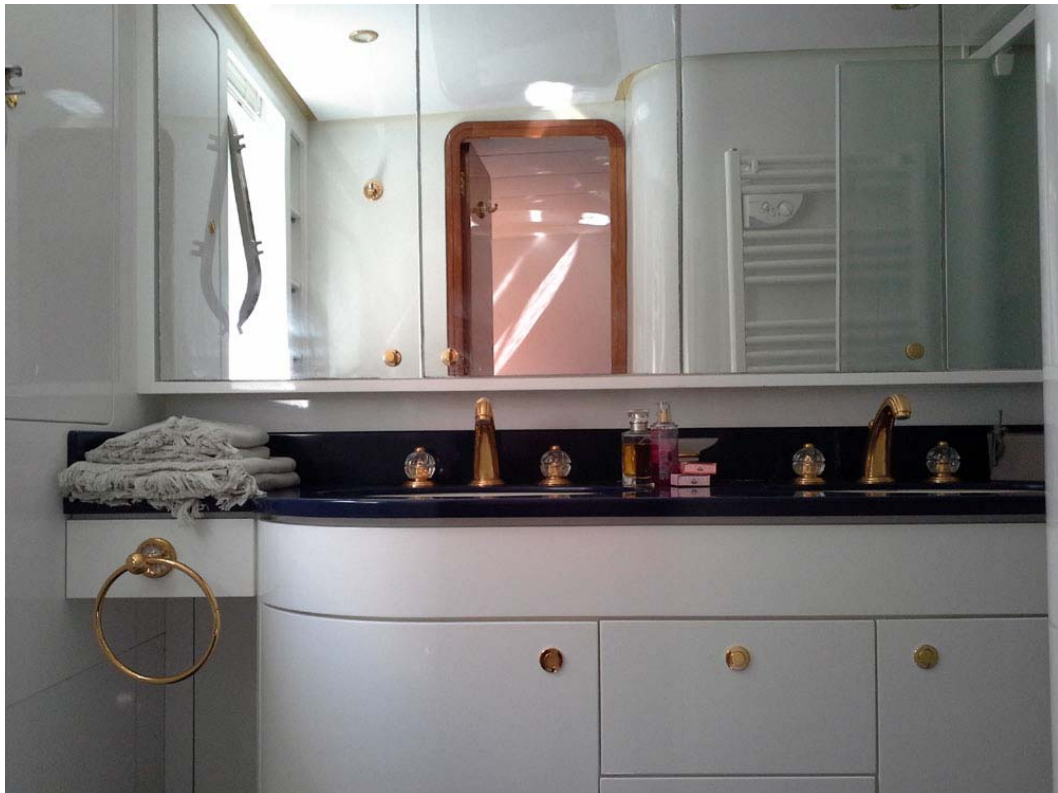
JAPI V

The open galley with bar counter - chart table / crew dinette in wheelhouse



JAPI V

Multi-purpose room starboard : Eurocave, washer drier, deep freezer, storage galore



JAPI V

The superb Master Cabin, centrally located, full-beam, plenty of light, with its own companion way for more privacy



JAPI V
The VIP Cabin forward with ensuite shower



JAPI V
The Twin Cabin on portside, ensuite shower room



JAPI V
Wheelhouse & fly-bridge commands

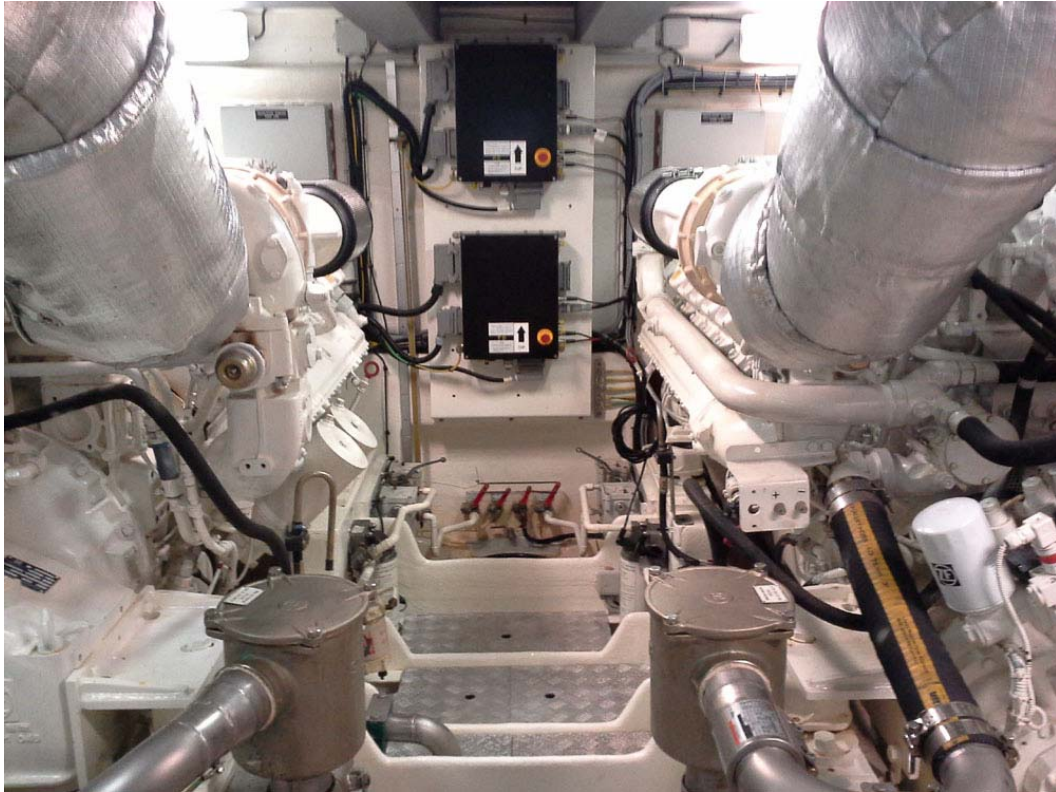


JAPI V
A huge bathing platform - Williams tender



JAPI V

Third command on aft deck, entrance to lazarette & engine room



JAPI V
2 x 1.360 hp 12V MAN - 20kw & 9kw Kohler generators
Extra battery bank